



**Southwest Agribusiness Consulting, Inc.**



[www.agconsult.net](http://www.agconsult.net)

**Country Elevators**

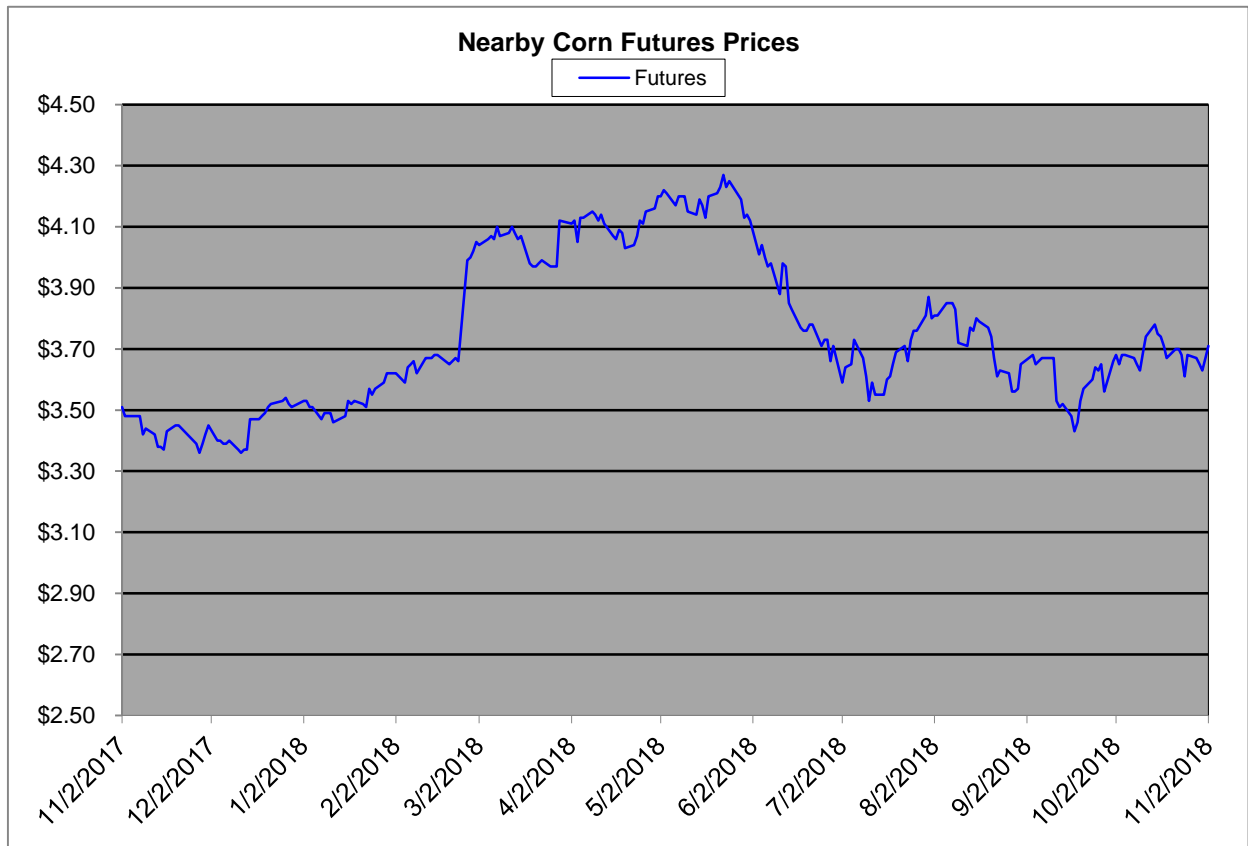
Region	Corn			Sorghum		Sorghum to Corn Differential	
	November 2nd - 3.71			November 2nd - 3.71		\$	%
	Avg. Basis	Cash Price		Avg. Basis	Cash Price		
Rio Grande Valley	85	4.54		45	4.14	-0.40	91
Texas Coastal Bend	10	3.79		-25	3.44	-0.35	91
Texas Upper Coast	60	4.29		-20	3.49	-0.80	81
Central Texas	85	4.54		40	4.09	-0.45	90
Texas N. High Plains	24	3.93		-24	3.45	-0.48	88
Texas S. High Plains	40	4.09		-10	3.59	-0.50	88
Eastern New Mexico	50	4.19		0	3.69	-0.50	88
North Missouri	-5	3.65		-53	3.17	-0.48	87
Central Kansas	-47	3.22		-73	2.96	-0.27	92
West Kansas	-15	3.54		-59	3.10	-0.44	88
South East Colorado	-25	3.44		-80	2.89	-0.55	84
Nebraska	-37	3.32					

**Feeder/Ethanol**

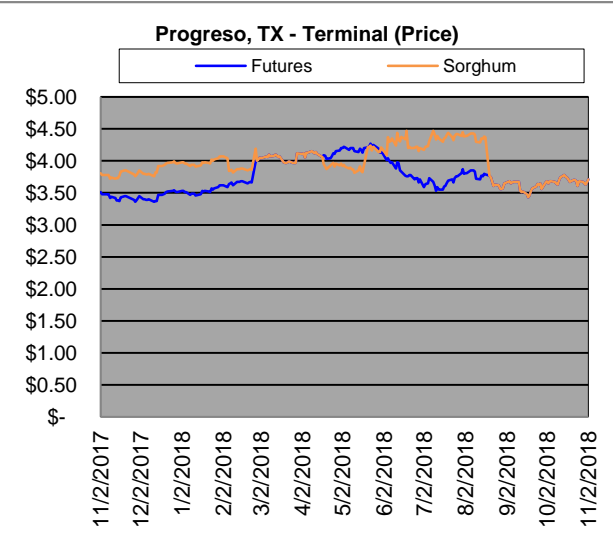
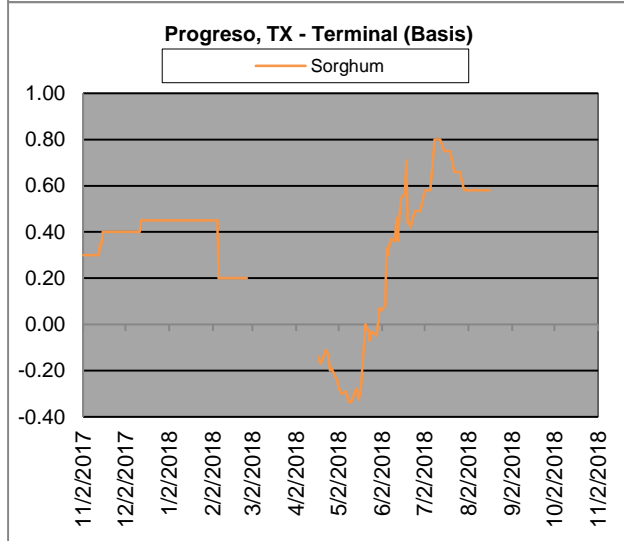
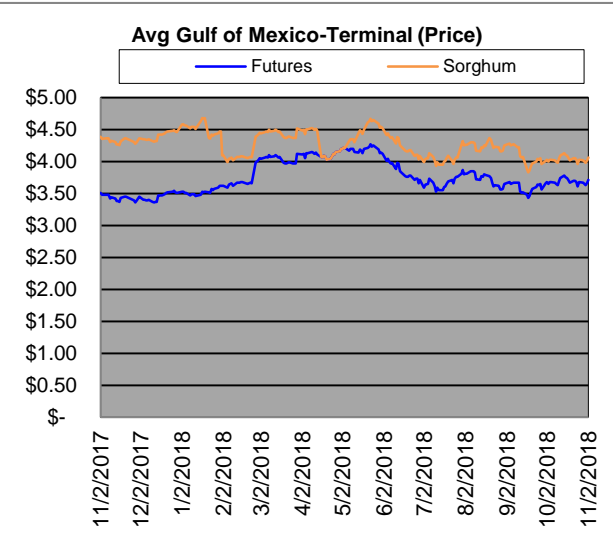
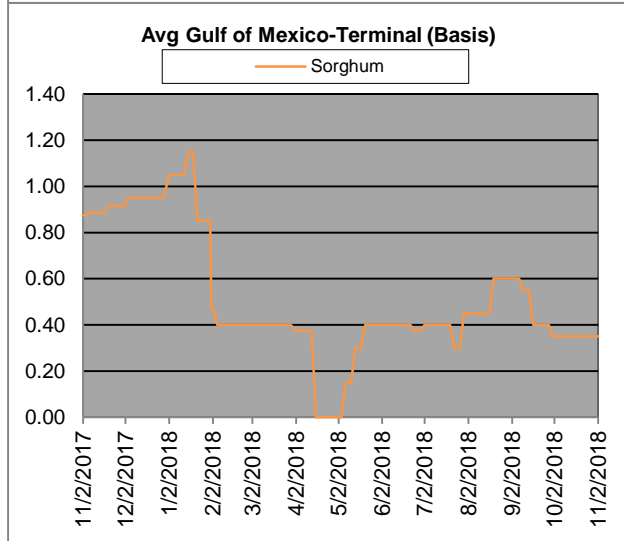
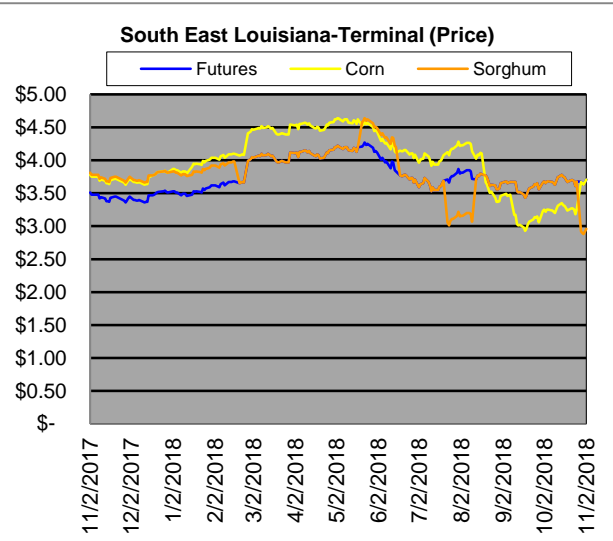
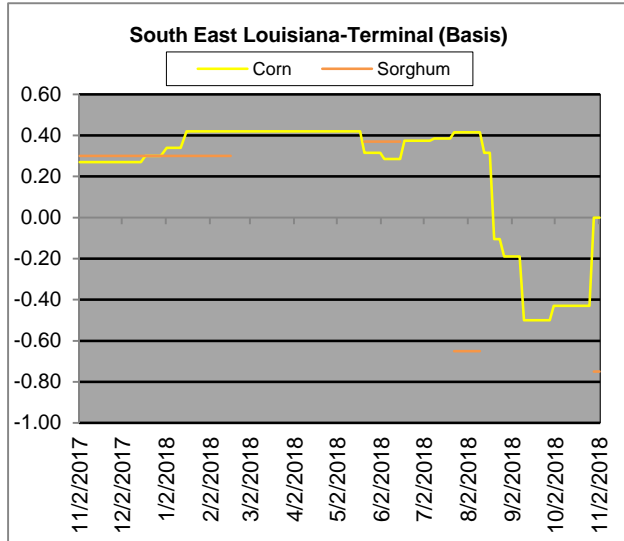
Region	Corn			Sorghum		Sorghum to Corn Differential	
	November 2nd - 3.71			November 2nd - 3.71		\$	%
	Avg. Basis	Cash Price		Avg. Basis	Cash Price		
Central Texas (Poultry )	70	4.39					
Texas N. High Plains (Cattle)	60	4.29		20	3.89	-0.40	91
Arkansas (Poultry)	10	3.79					
South West Kansas (Cattle)	-15	3.54		-50	3.19	-0.35	90
Texas S. High Plains (Ethanol)	30	3.99		0	3.69	-0.30	92
Kansas (Ethanol)	-15	3.54		-45	3.24	-0.30	92

Export/ Terminal

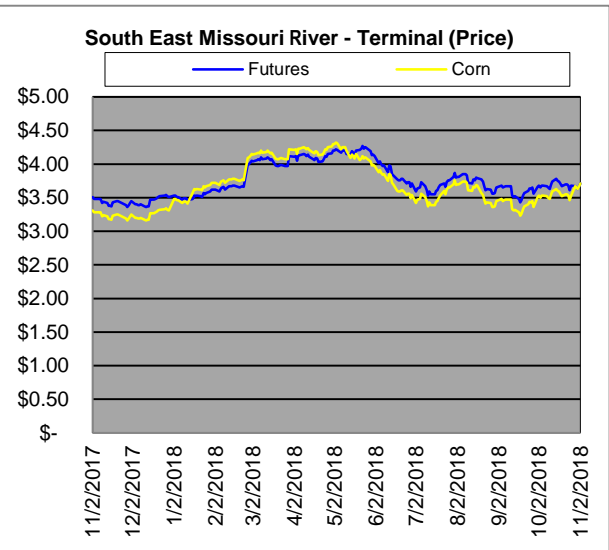
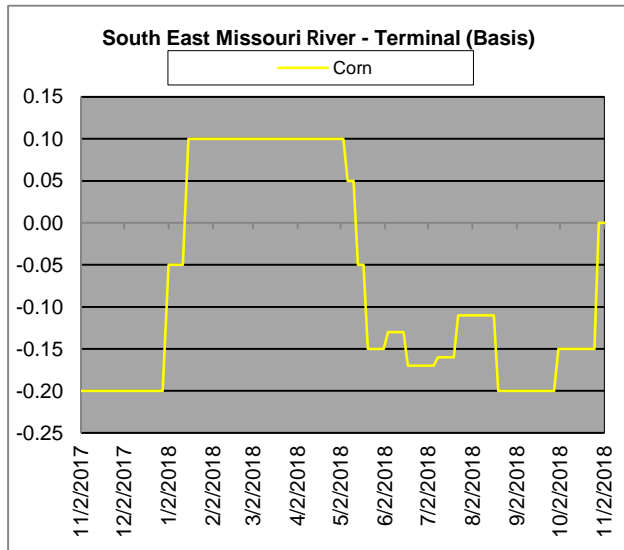
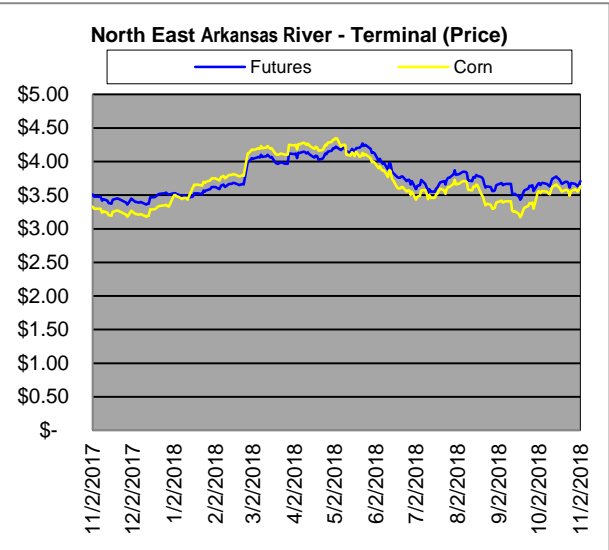
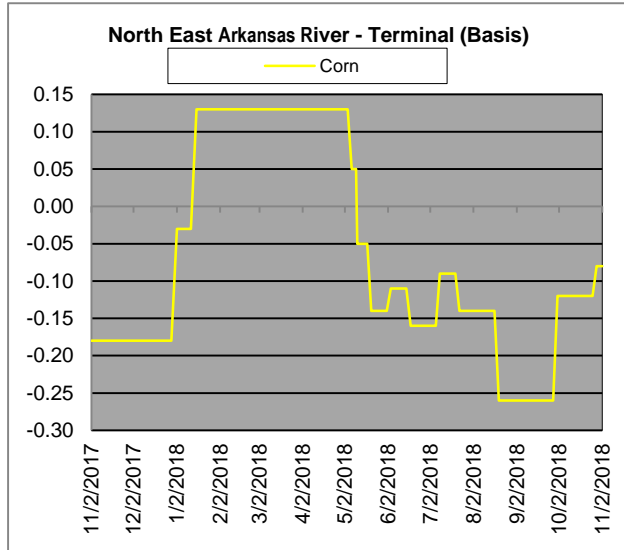
Region	Corn			Sorghum		Sorghum to Corn Differential	
	November 2nd - 3.71			November 2nd - 3.71		\$	%
	Avg. Basis	Cash Price		Avg. Basis	Cash Price		
Corpus Christi	80	4.49		35	4.04	-0.45	90
Houston				35	4.04		
New Orleans	43	4.12					
Baton Rouge							
Arkansas River	-8	3.61					
Memphis	-6	3.63		-30	3.39	-0.24	93
Missouri River	0	3.69		-135	2.34	-1.35	63
St. Louis	8	3.77		-10	3.59	-0.18	95
Kansas City	-60	3.09		-60	3.09	0.00	100
Central Kansas	-45	3.24		-55	3.14	-0.10	97
South Dakota	-55	3.14					



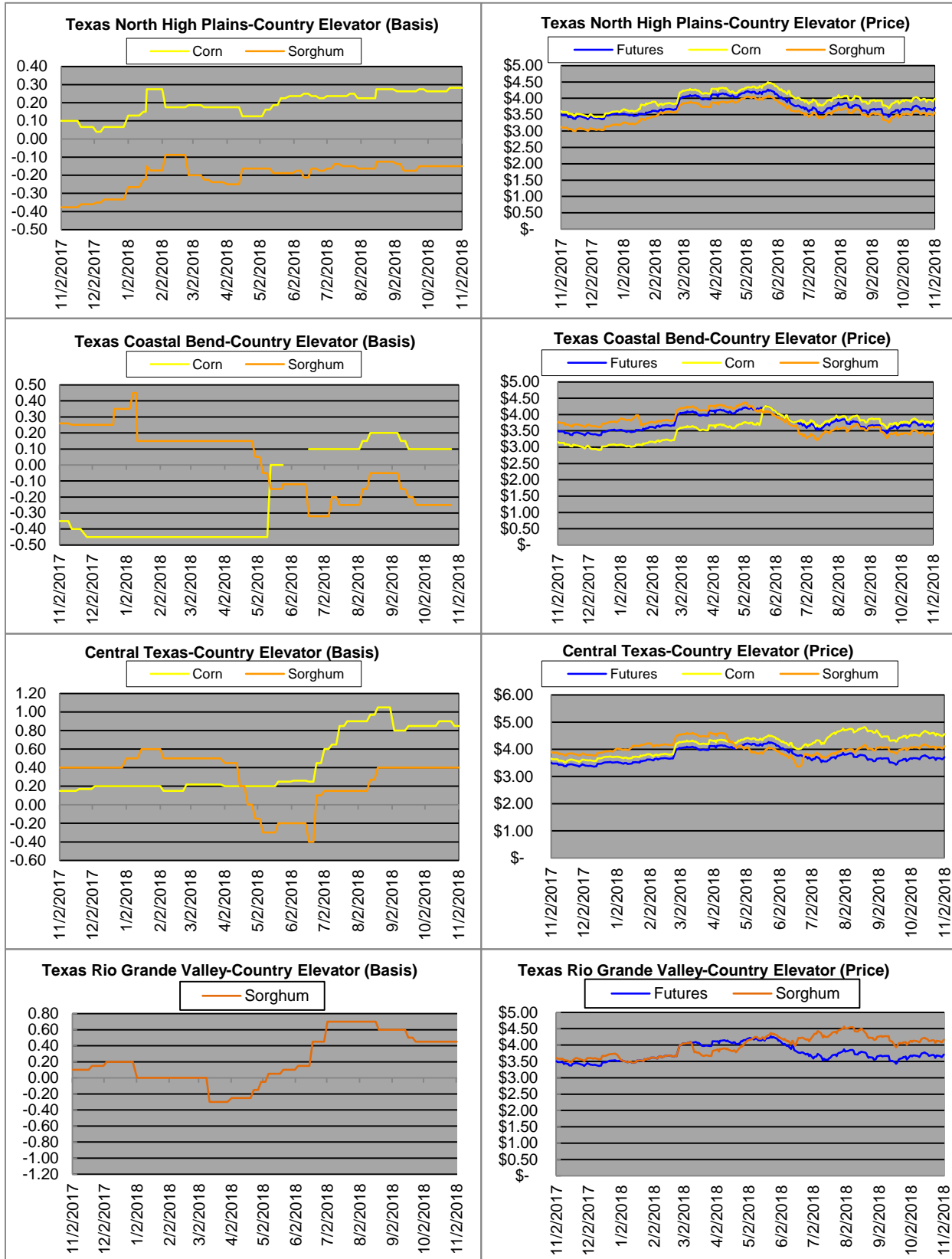
# Exports



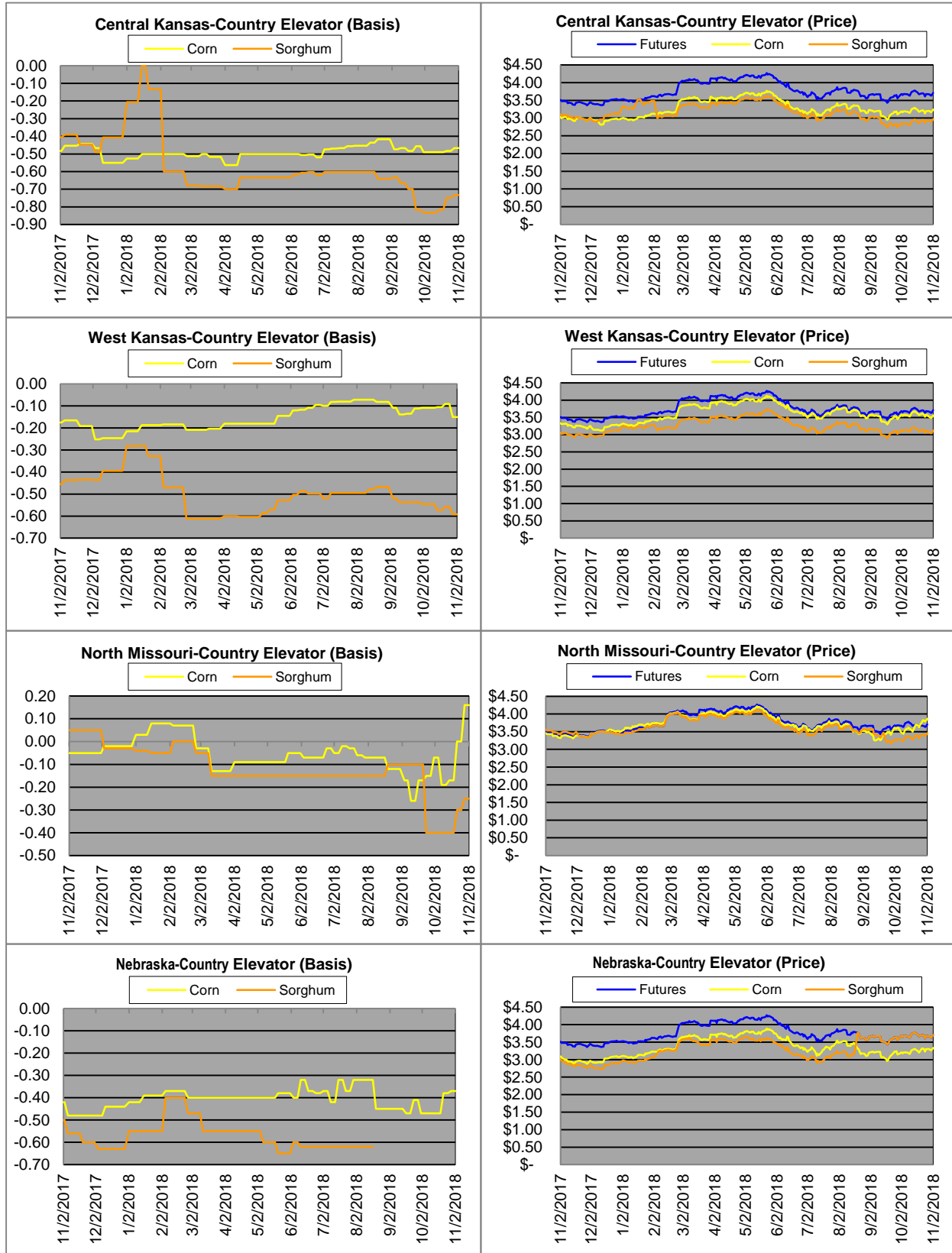
# Exports cont.



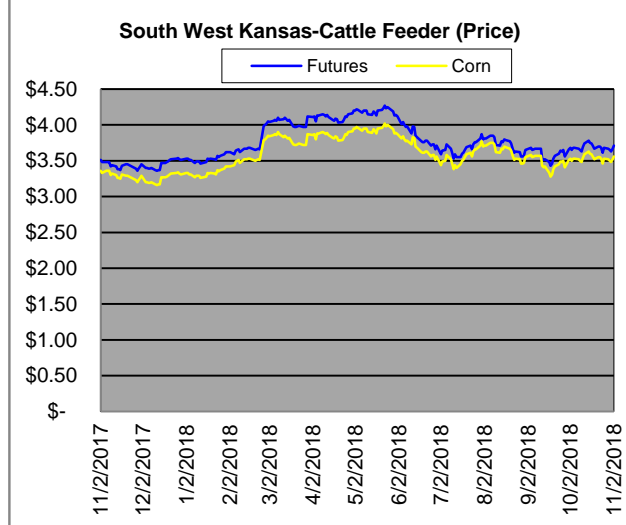
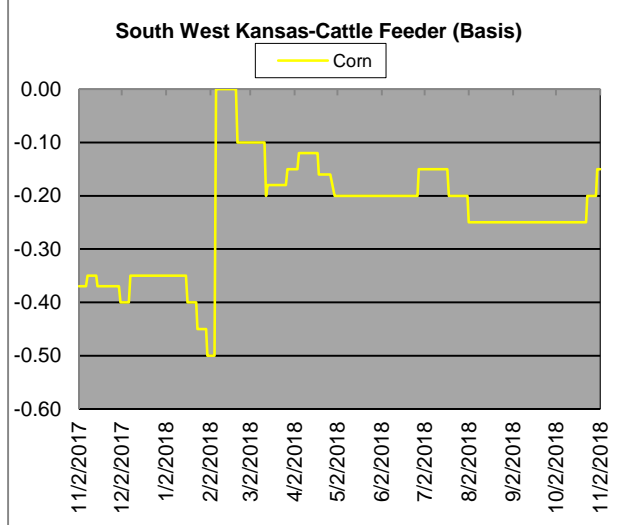
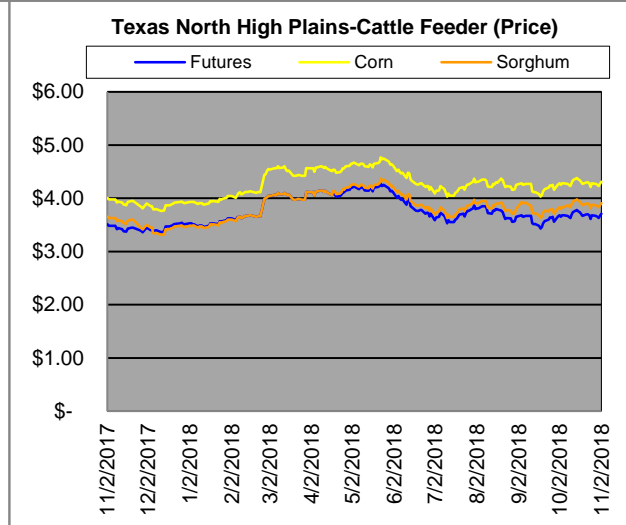
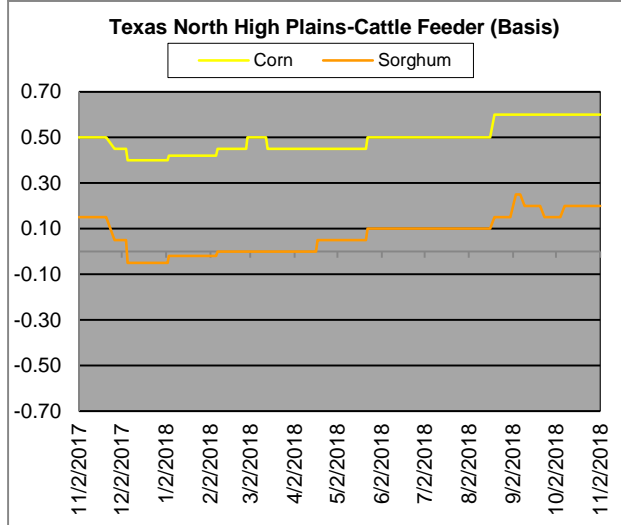
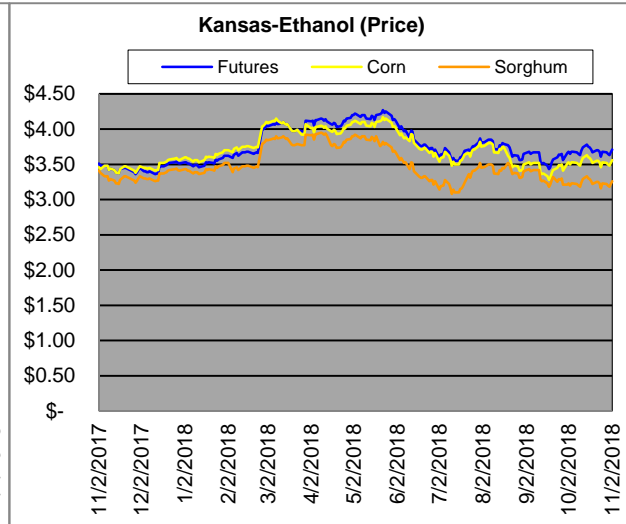
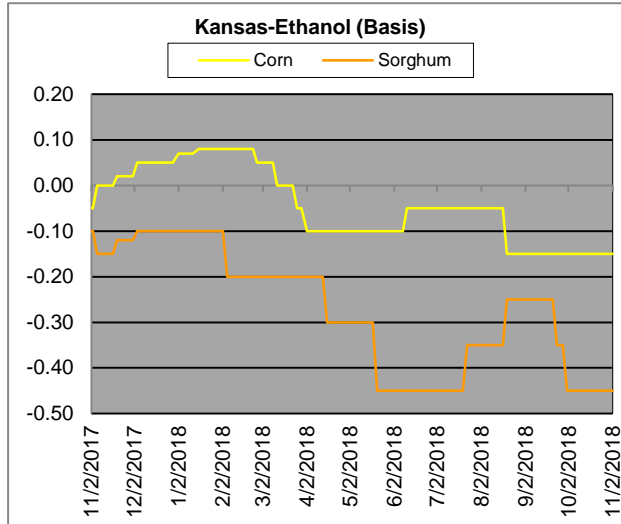
# Country Elevators



# Country Elevators



# Ethanol/Feeders



# Supply and Demand

<b>Corn ‡</b>	<b>2014/15</b>	<b>2015/16</b>	<b>2016/17</b>	<b>17/18 Est.</b>	<b>18/19 Proj.</b>	<b>18/19 Proj.*</b>
Acres Planted	90.9	88	94	90.2	89.1	as % of Total Supply or Use
Acres Harvested	83.1	80.8	86.7	82.7	81.8	
Yield (Bushels / Acre)	173.4	168.4	174.6	176.6	180.7	13%
Beginning Stocks	1,236	1,731	1737	2293	2140	87%
Production	14,407	13,602	15,148	14,604	14,778	0%
Imports	25	68	57	36	50	100%
Total Supply	15,668	15,401	16942	16933	16968	44%
Feed & Residual	5,375	5,114	5473	5302	5550	56%
Food, Seed & Industrial	6,535	6,648	6882	7054	7130	84%
Total Domestic Use	11,910	11,763	12356	12356	12680	16%
Exports	1,750	1,901	2293	2438	2475	100%
Total Use	13,660	13,664	14649	14794	15155	
Ending Stocks	2,008	1737	2293	2140	1813	
Stocks/Exports	115%	91%	100%	88%	73%	
Stocks/Use	15%	13%	16%	14%	12%	
Season Average Price	<b>\$3.50</b>	<b>\$3.61</b>	<b>\$3.36</b>	<b>\$3.36</b>	<b>\$4.00</b>	
‡ In Millions of bushels except Acres Planted, Acres Harvested, and Yield				* Current Month's Projection		
<b>Sorghum ‡</b>	<b>2014/15</b>	<b>2015/16</b>	<b>2016/17</b>	<b>17/18 Est.</b>	<b>18/19 Proj.</b>	<b>18/19 Proj.*</b>
Acres Planted	7.2	8.5	6.7	5.6	5.8	as % of Total Supply or Use
Acres Harvested	6.2	7.9	6.2	5	5.1	
Yield (Bushels / Acre)	66.1	76	77.9	72.1	75	8%
Beginning Stocks	34	18	37	33	35	92%
Production	408	597	480	364	382	0%
Imports	0	5	2	2	0	100%
Total Supply	442	620	519	399	417	46%
Feed & Residual	95	107	130	100	105	54%
Food, Seed & Industrial	80	137	115	59	125	61%
Total Domestic Use	175	244	245	159	230	39%
Exports	230	340	241	205	150	100%
Total Use	405	584	486	364	380	
Ending Stocks	37	37	33	35	37	
Stocks/Exports	16%	11%	14%	17%	25%	
Stocks/Use	9%	6%	7%	10%	10%	
Season Average Price	<b>\$3.45</b>	<b>\$3.31</b>	<b>\$2.79</b>	<b>\$3.22</b>	<b>\$3.80</b>	
<b>Sorghum as a % of Corn</b>	<b>2014/15</b>	<b>2015/16</b>	<b>2016/17</b>	<b>17/18 Est.</b>	<b>18/19 Proj.</b>	
Acres Planted	7.92%	9.66%	7.13%	6.21%	6.51%	
Acres Harvested	7.46%	9.78%	7.15%	6.05%	6.23%	
Yield (Bushels per Acre)	38.12%	45.13%	44.62%	40.83%	41.51%	
Beginning Stocks	2.75%	1.04%	2.13%	1.44%	1.64%	
Production	2.83%	4.39%	3.17%	2.49%	2.58%	
Imports	0.00%	7.35%	3.51%	5.56%	0.00%	
Total Supply	2.82%	4.03%	3.06%	2.36%	2.46%	
Feed & Residual	1.77%	2.09%	2.38%	1.89%	1.89%	
Food, Seed & Industrial	1.22%	2.06%	1.67%	0.84%	1.75%	
Total Domestic Use	1.47%	2.07%	1.98%	1.29%	1.81%	
Exports	13.14%	17.89%	10.51%	8.41%	6.06%	
Total Use	2.96%	4.27%	3.32%	2.46%	2.51%	
Ending Stocks	1.84%	2.13%	1.44%	1.64%	2.04%	
Stocks/Exports	14.02%	11.91%	13.69%	19.45%	33.67%	
Stocks/Use	62.15%	49.84%	43.38%	66.47%	81.39%	
Season Average Price	98.57%	91.69%	83.04%	95.83%	95.00%	



